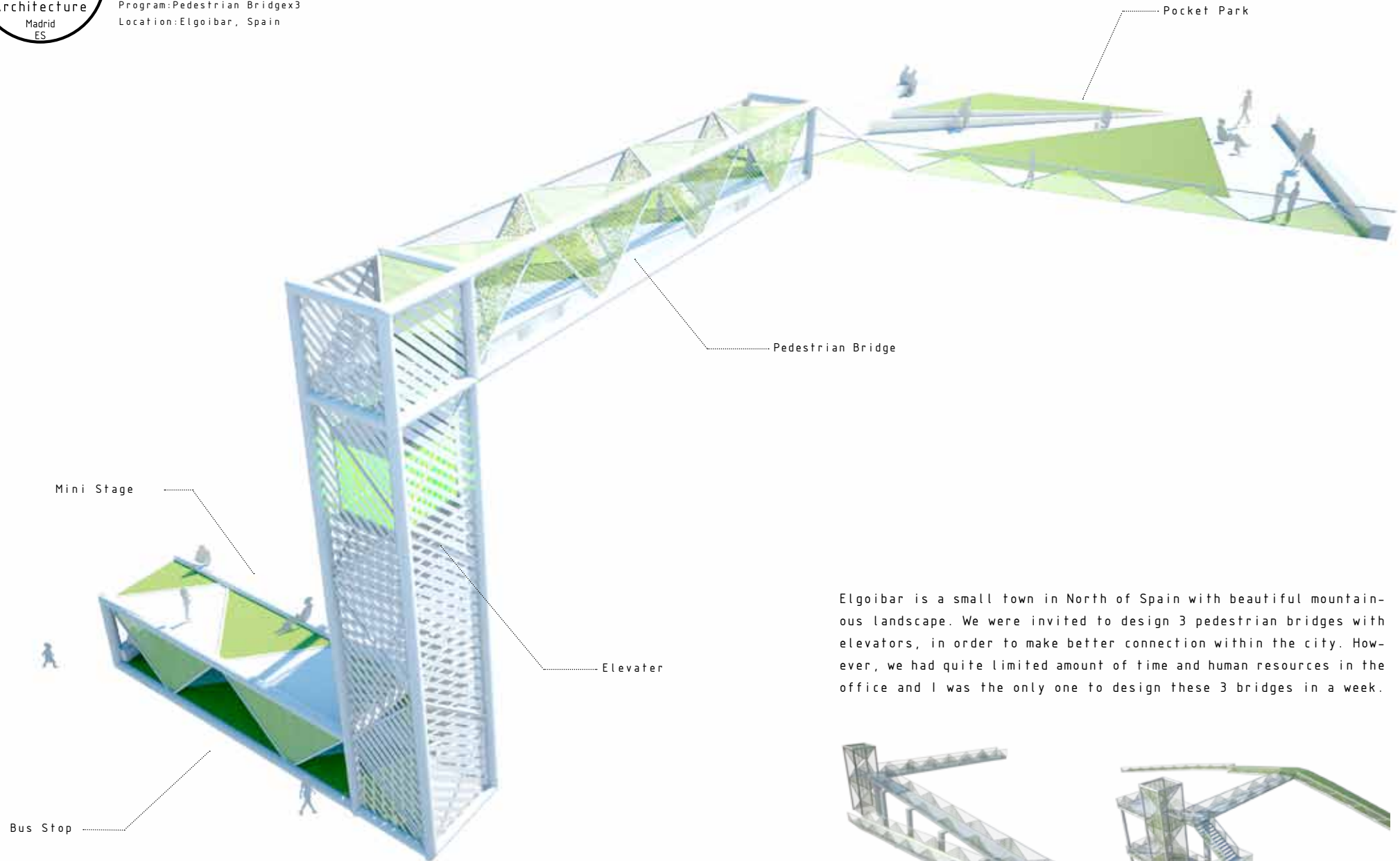




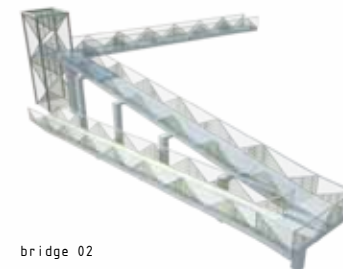
# Elgoibar

Time: November 2009  
Duration: 4 days  
Type: Proposal  
Program: Pedestrian Bridgex3  
Location: Elgoibar, Spain

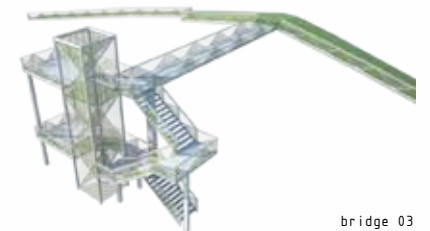


bridge 01

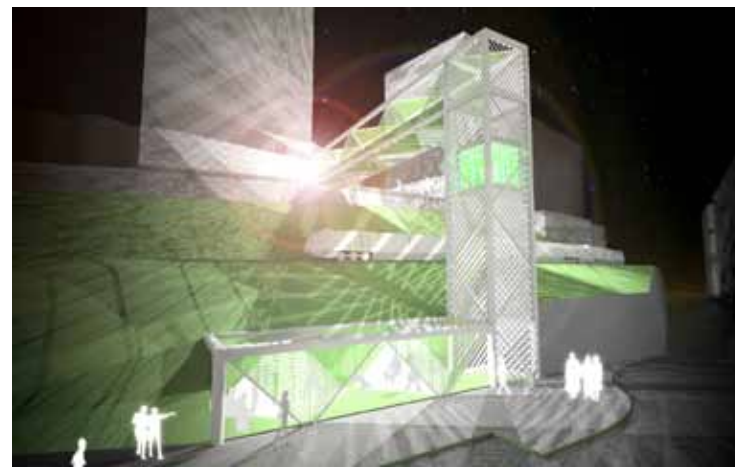
Elgoibar is a small town in North of Spain with beautiful mountainous landscape. We were invited to design 3 pedestrian bridges with elevators, in order to make better connection within the city. However, we had quite limited amount of time and human resources in the office and I was the only one to design these 3 bridges in a week.



bridge 02

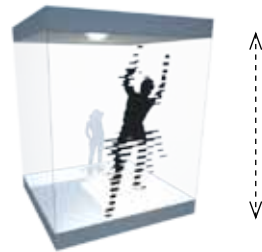
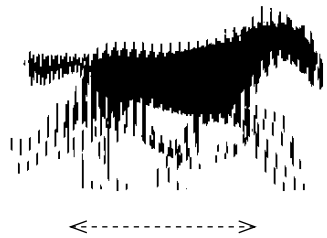
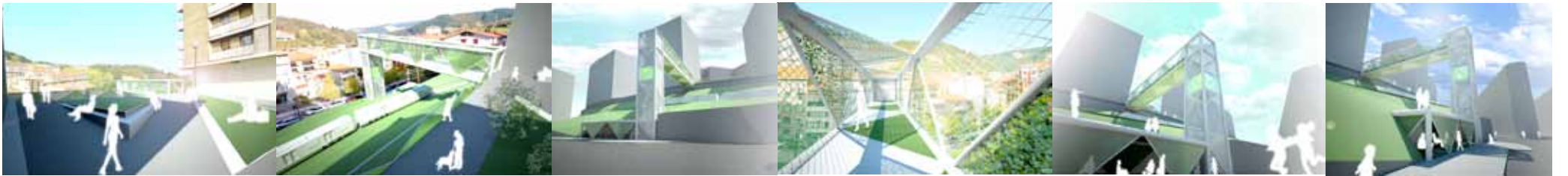


bridge 03



**Bridge01 = small square**  
 + bridge above train truck  
 + 20 m elevator  
 + bus stop  
 + new attraction, symbol

The most interesting bridge will be located in the city center (bridge 01) and it needs to have 20 m of height difference to go over a train truck. Since the project need to be affordable for the small town, I tried to make 3 parts of the bridge (pedestrian bridge, elevator and bus stop) with same components, and it looks as if a tube changes direction depending on the function.



**slit animation on elevator**

Surface of the tube is covered with truss structure and grids of sub structures follow the direction of the truss. The substructures are used also for the hand rail and the fence of the small square and 4 different parts of the bridge can be recognized as one.

Apart from the functionality, I tried to make the elevator as a symbol of the area. To make the movement of elevator more dramatic, I tried to use slit animation technique on the elevator; as the elevator move, a silhouette changes the shape (or the color of elevator changes as elevator moves). Celebration of everyday movement.

