

# Typhoon

Time: October, 2007

Type: Competition

Program: Housing+Retail+Hotel+Office

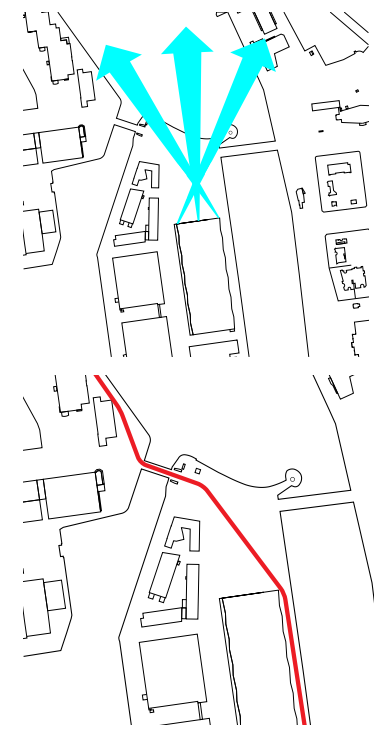
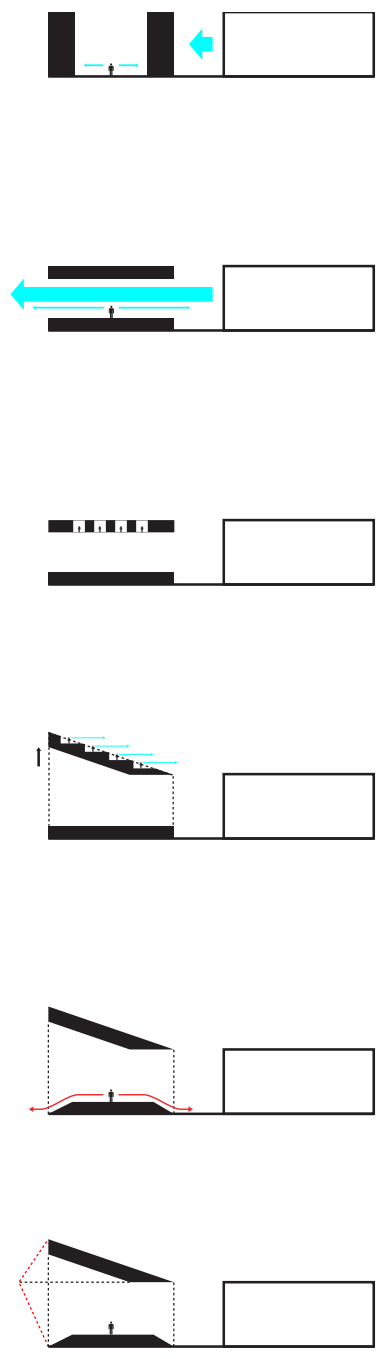
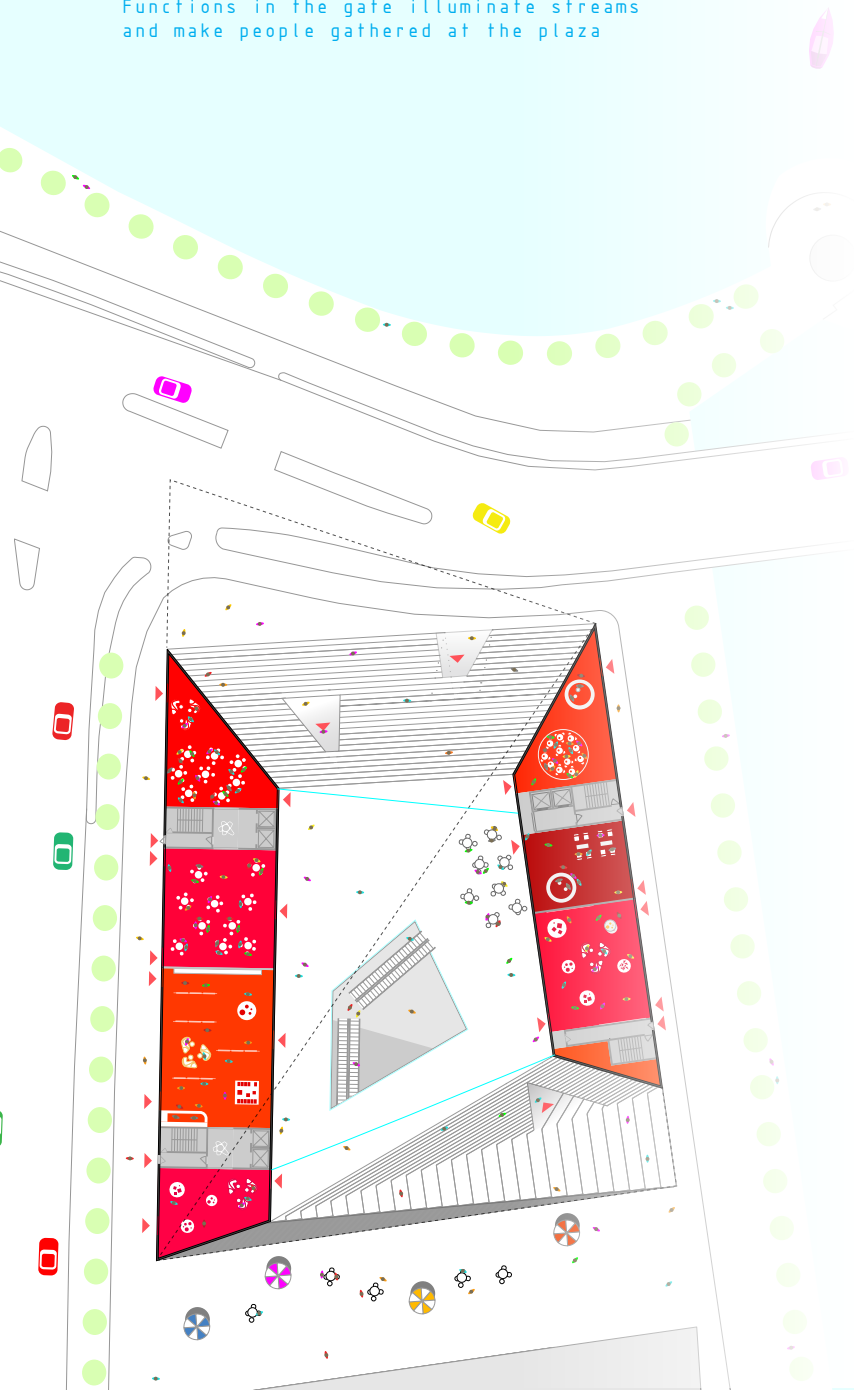
Size: 24,000m<sup>2</sup>

Location: Stockholm, Sweden

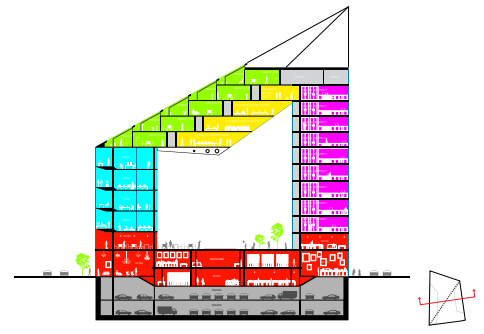
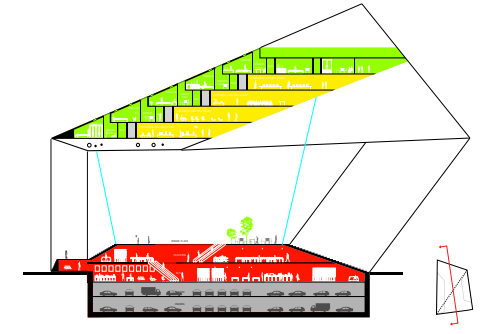


Streams of View and People go through the gate.

Functions in the gate illuminate streams and make people gathered at the plaza



- Housing
- Conference and gallerier
- Hotel
- Office
- Retail
- Parking



### Gate

The volume was created for both securing the view from the existing library and keeping the continuity of the streets along the harbor.

In this gate, top part of the building is used for housing and to provide great view, sun shine and terraces to them, the top part is shaped to have angles, and two columns like parts are used for hotels and offices. View and people goes through many different functions.

A plaza inside is surrounded by these 3 functions and re-tails on ground level and underground, and we can easily imagine the plaza can be used for multiple use, concert, open market, lecture and etc.



