

Odenplane

Time: February 2008

Type: Competition

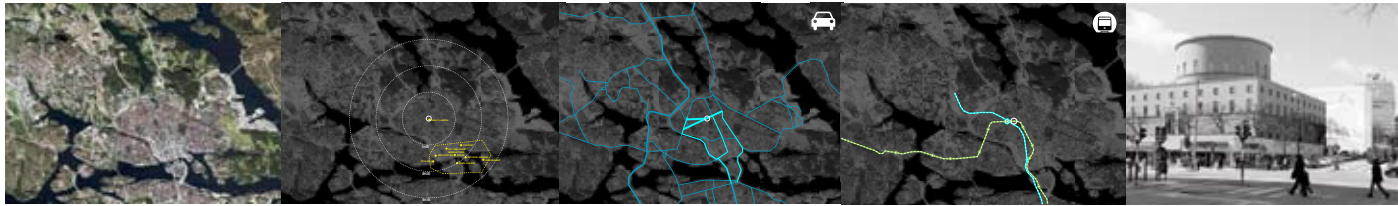
Program: Office + Retail

Size: 49,000m²

Location: Stockholm, Sweden

Status: 1st Prize





Urban scale Potentials



Distance from the city Center



Private Transport



Public Transport



Asplund Library

Main Attractions are disconnected



Asplund Library



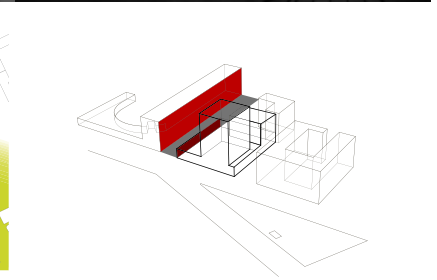
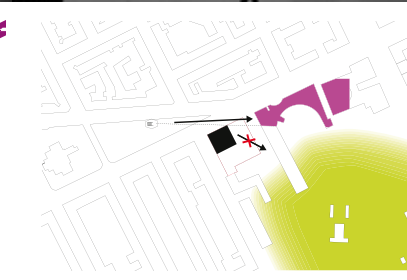
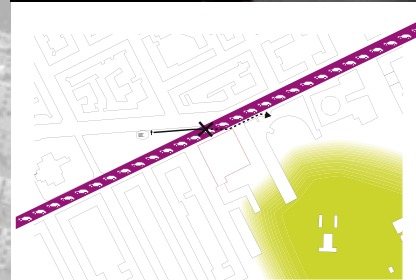
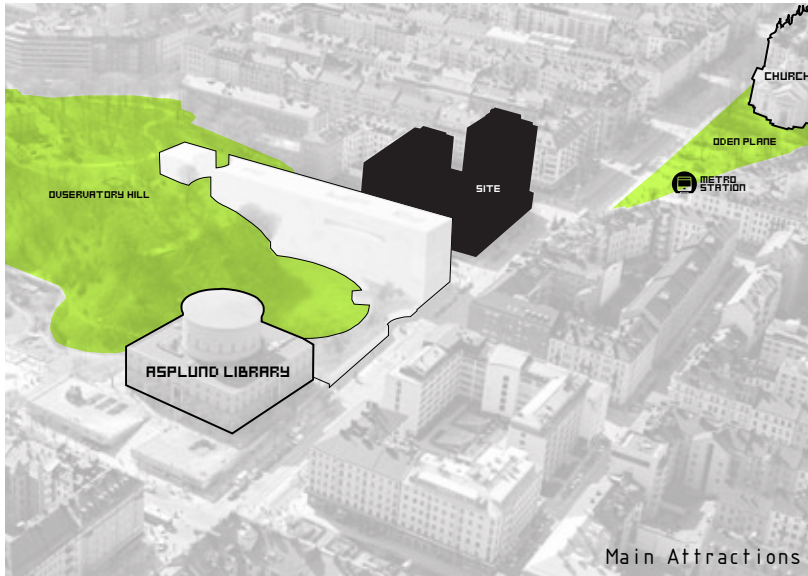
Observatory Hill



Metro Station

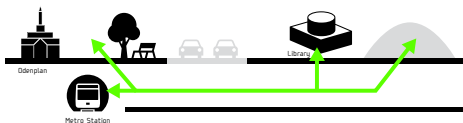


Odenplan

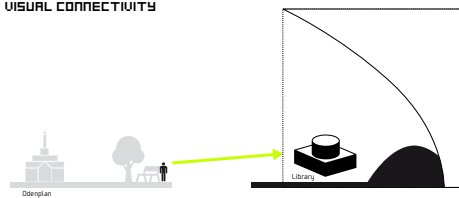


>> to make better visual and phisical connection between Library and Odenplan(+Metro staion)

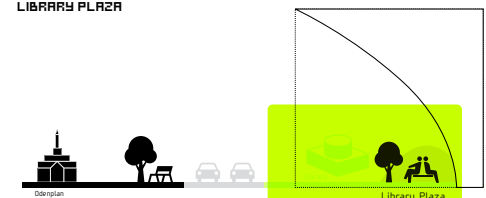
PUBLIC SPACE
PEDESTRIAN ACCESS

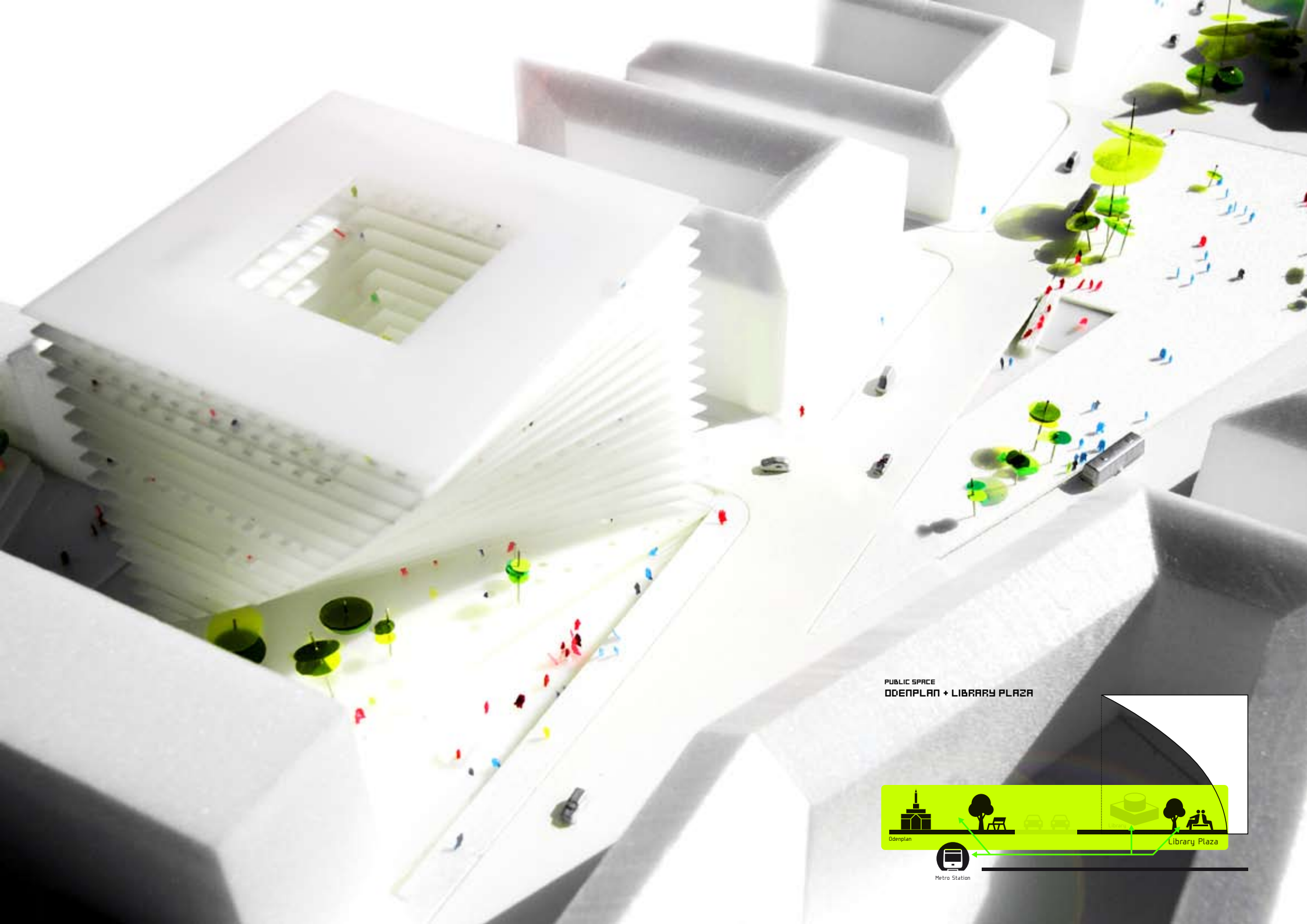


PUBLIC SPACE
VISUAL CONNECTIVITY



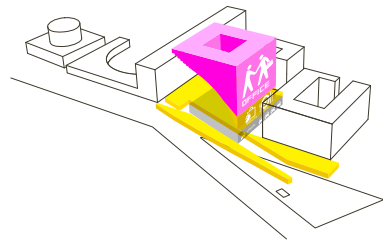
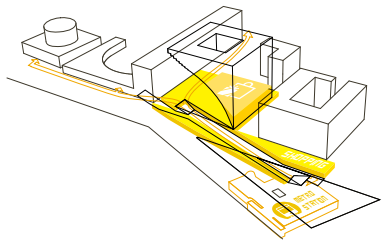
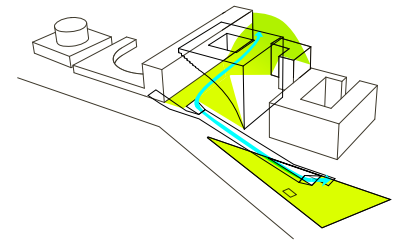
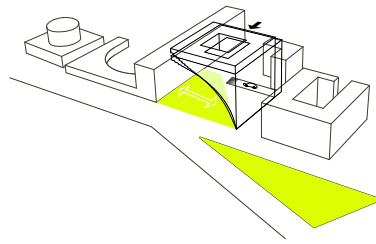
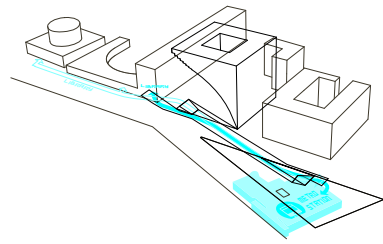
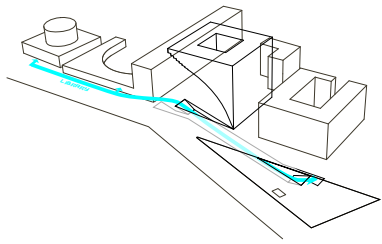
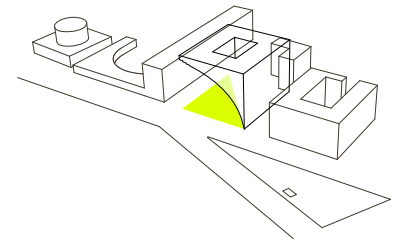
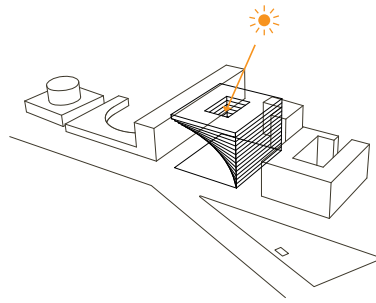
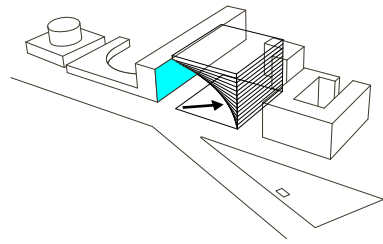
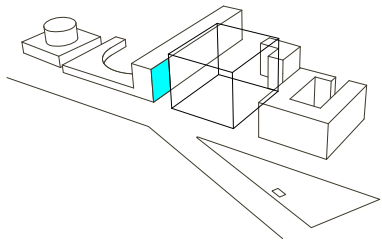
PUBLIC SPACE
LIBRARY PLAZA





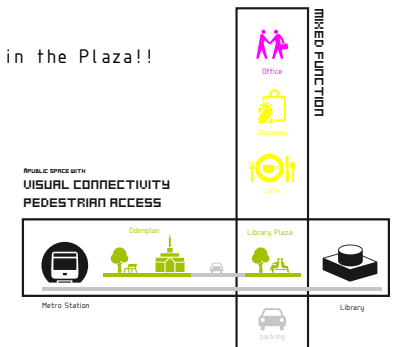
PUBLIC SPACE
DOPENPLAN + LIBRARY PLAZA

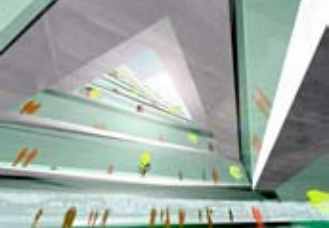
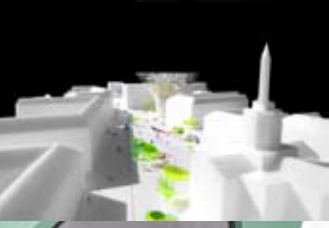
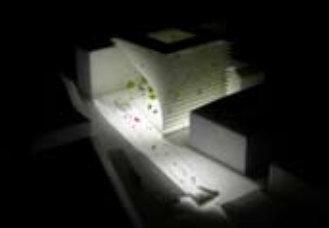
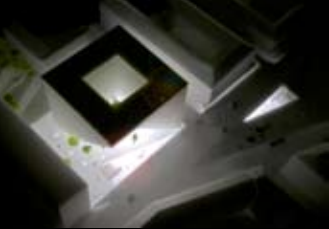
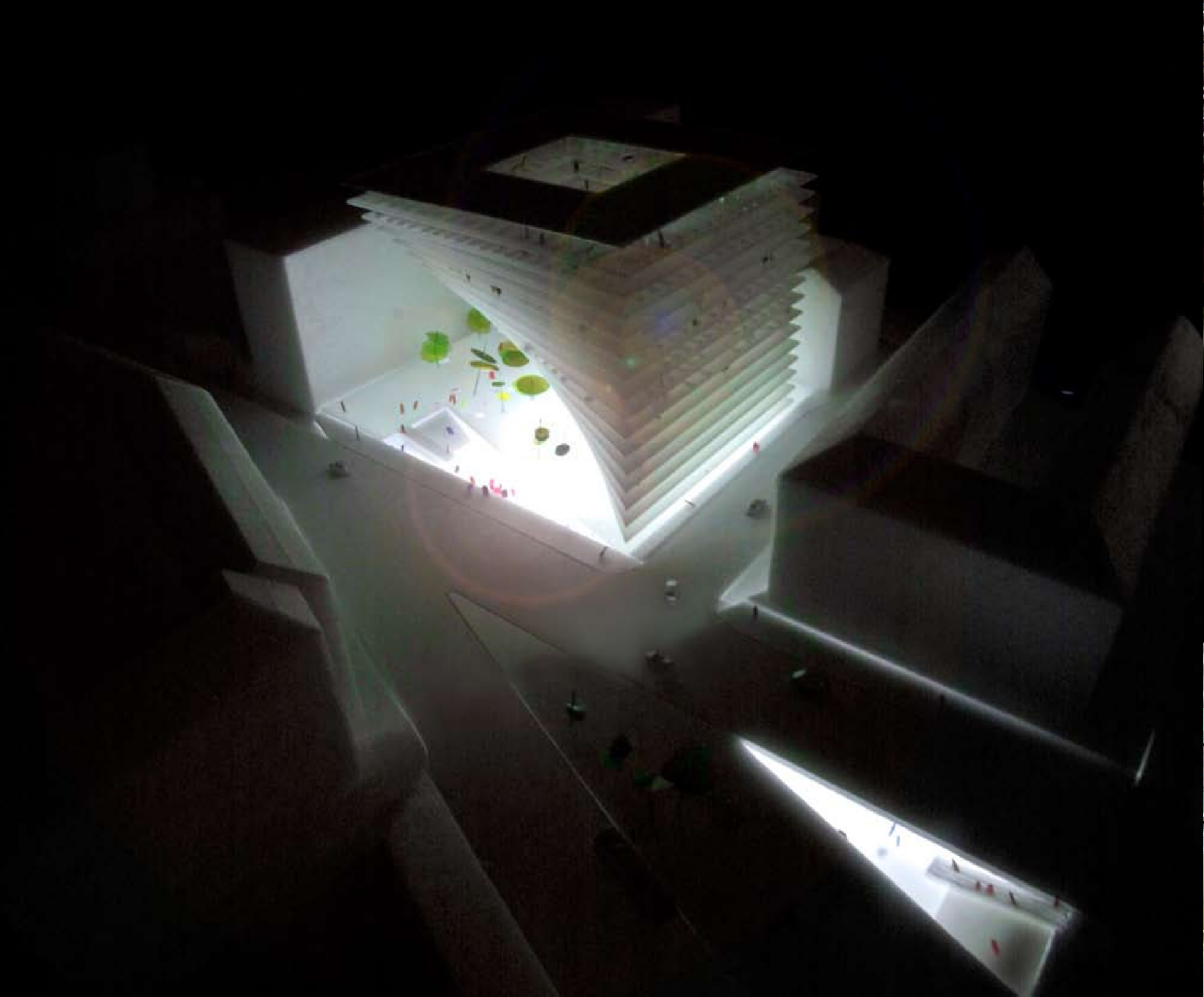


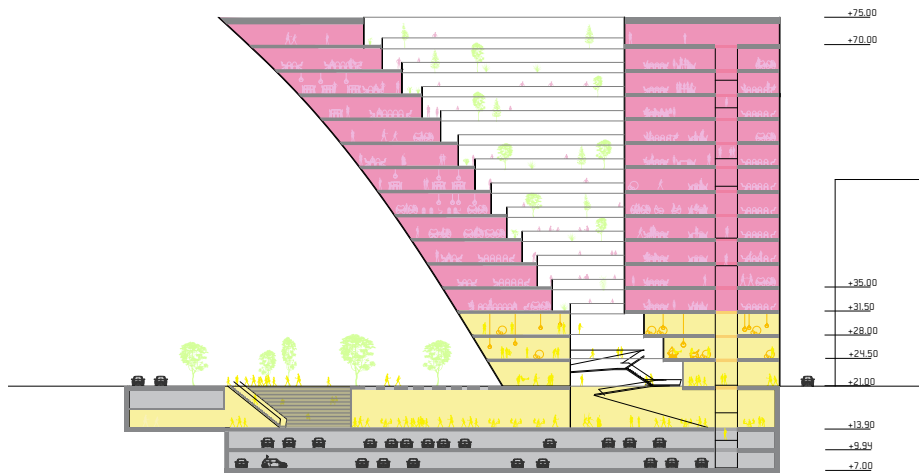
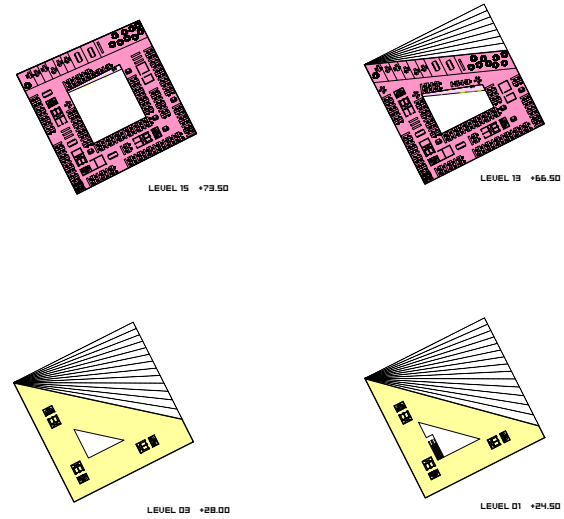
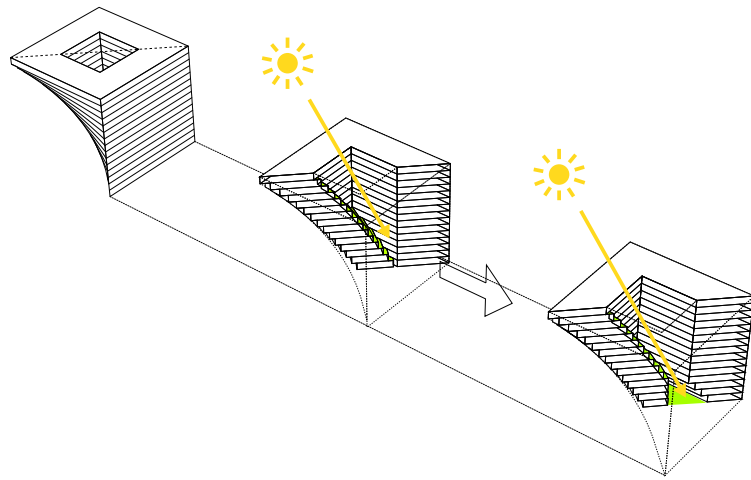


Papa goes to library, Mama goes shopping and I plays in the Plaza!!

The shape of the building not only make the visual connectivity bigger but also make space between buildings. Therefore the space can be used for a new library plaza connected with new under path, and the two plazas (odenplan + new library plaza) can be (phiscaly and visually) regarded as 1 plaza. The Plaza is also directly connected with shopping area of the building and the public space can obtain more life.







Like typical Swedish perimeter block, the building has a whole inside. Each floor has optimal width (18m) of office space around, and, because of the exterior shape, each floor has terraces inside. At the same time, the atrium-like space is connected with both above and underground shopping areas, and sun lights are provided through the building.

